



**TANZANIA  
WILD CAMPS**

# **TANZANIA WILD CAMPS & LODGES**

- Highview Hotel
- Highview Coffee Lodge
- Ngorongoro Wild camp
- Ngorongoro Safari Lodge
- Serengeti Wild camp
- Serengeti Wildebeest Camp
- Serengeti Safari Lodge
- Ikoma Wild camp

**Factsheets**



+255 784 451 000 | [sales@wildcamps.com](mailto:sales@wildcamps.com)

[www.tanzaniawildcamps.com](http://www.tanzaniawildcamps.com)





## HIGH VIEW HOTEL

Karatu, Arusha Tanzania

### GUEST ROOM INFORMATION

Twin/Double Rooms 37  
Triple Rooms 4

#### About High view Hotel

**High view Hotel** Located at high elevation above the town of Karatu, the hotel has spacious, comfortable ensuite rooms with a spectacular view over the surrounding hills and continental cuisines served in our fine indoor and outdoor restaurant. The restaurant also host as African themed night were our guest can taste the diversity of our exquisite food whilst being entertained by live music.

#### ACTIVITIES

- Game Drives.
- Walking Safaris
- Nature Walks
- Swimming Pool
- Acrobatic Shows
- Cultural dances
- Bushmen tour
- Cultural Tours Iraq tribe
- Coffee farm tour
- Video shows
- Bird Watching

#### CHECK IN FACILITIES

Check In 12:00 Hrs.  
Check out 10:00 Hrs  
Cold/Hot Towel

#### SPECIAL FEATURES

Gift shop.  
Concierge  
Wi – Fi  
Telephone Service  
Laundry

#### SPA TREATMENT

- Swedish massage | Aroma massage | Body Wraps
- Facial | Pedicure | Manicure | Arms & Legs Waxing

#### Dining and Bar Activities

- Multi Cuisine Restaurant.
- African Theme Bar.
- Special dietary request catered for (e.g. Vegetarian, Kosher, Gluten. free) with advance notification.
- Sundowner Cocktails.
- Bush breakfast at a private site.
- Bush Barbecue lunch and Dinner

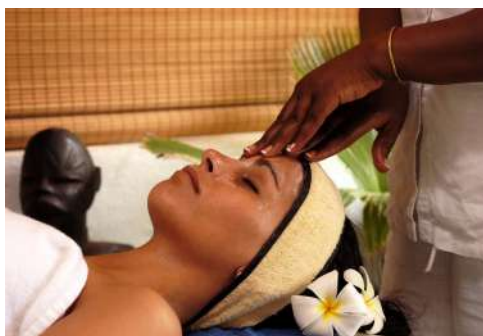
#### Transportation to /From Lodge

- 140 kms (2 -3 Hours' Drive) from Arusha on a dry weather road through Makuyuni, Mtowambu & Karatu Area.
- 45 minutes from Arusha Airport to Lake Manyara Airstrip.
- Manyara Airstrip is 10Kms from the Hotel, 'Meet and greet' and transfer services can be provided (Please advise arrival time in advance).

### PLACES OF INTEREST

**Zainab Ansell,**  
Director,  
Tanzania Wildcamps & Lodges  
P.O.Box 94, Karatu  
Email: Sales@Wildcamps.com

**Reservation Department**  
Tel: +255 754 451 000  
Email: reservation@tanzaniawildcamps.com





## HIGH VIEW COFFEE LODGE

### GUEST ROOM INFORMATION

Twin/Double Rooms 8

Karatu, Arusha Tanzania

#### About High view Coffee Lodge

Is located at high elevation above the town of Karatu. The lodge has 04 cottages each has double rooms with a spectacular view over the surrounding hills and the local agricultural countryside. It gives you opportunity to explore the Northern tourism circuit in Tanzania as you experience the authenticity of the surrounding culture of the Mbulu, Iraq, Bushmen and Maasai tribe. The Lodge is modern, comfortable and offers many contemporary amenities, such as a large indoor & outdoor garden, restaurant with local and continental cuisine, 04 cottages with double rooms, a lounge with bar, fire place, entertainment and internet gift shop, spa, massages and a modern swimming pool.

#### Dining and Bar Activities

- Multi Cuisine Restaurant.
- African Theme Bar.
- Special dietary request catered for (e.g. Vegetarian, Kosher, Gluten. free) with advance notification.
- Sundowner Cocktails.
- Bush breakfast at a private site.
- Bush Barbecue lunch and Dinner

#### Transportation to /From Lodge

- 140 kms (2 -3 Hours' Drive) from Arusha on a dry weather road through Makuyuni, Mtwambu & Karatu Area.
- 45 minutes from Arusha Airport to Lake Manyara Airstrip.
- Manyara Airstrip is 10Kms from the Hotel, 'Meet and greet' and transfer services can be provided (Please advise arrival time in advance).

### PLACES OF INTEREST

#### ACTIVITIES

- Game Drives.
- Walking Safaris
- Nature Walks
- Swimming Pool
- Acrobatic Shows
- Cultural dances
- Bushmen tour
- Cultural Tours Iraq tribe
- Coffee farm tour
- Video shows
- Bird Watching

#### CHECK IN FACILITIES

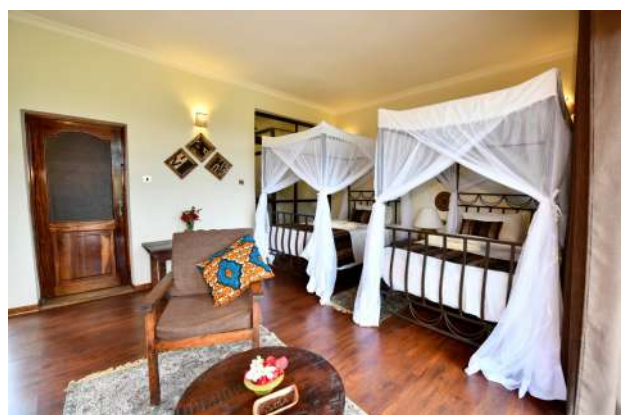
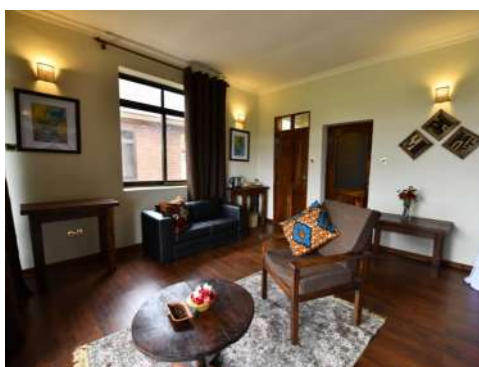
Check In 12:00 Hrs.  
Check out 10:00 Hrs  
Cold/Hot Towel

#### SPECIAL FEATURES

Gift shop.  
Concierge  
Wi - Fi  
Telephone Service  
Laundry

**Zainab Ansell,**  
Director,  
Tanzania Wildcamps & Lodges  
P.O.Box 94, Karatu  
Email: Sales@Wildcamps.com

**Reservation Department**  
Tel: +255 754 451 000  
Email: reservation@tanzaniawildcamps.com







# NGORONGORO WILD CAMPS

## GUEST ROOM INFORMATION

Double / Twin Rooms 17  
Single Rooms 4  
Triple Room 4  
Quadruple Room 1

## Ngorongoro Conservation Area

### About Ngorongoro Wild Camps

**Ngorongoro Wild Camp** is located in the South of the Ngorongoro Conservation Area, Approx. 50 km south – west of Karatu Town. The permanent camp is composed of 20 comfortable luxury tents and 6 cottages, as well as large dining and reception area.



### Dining and Bar Activities

- Multi Cuisine Restaurant.
- African Theme Bar.
- Special dietary request catered for (e.g. Vegetarian, Kosher, Gluten. free) with advance notification.
- Sundowner Cocktails.
- Bush breakfast at a private site.
- Bush Barbecue lunch and Dinner

### Transportation to /From Lodge

- 190 kms (3 - 4 Hours' Drive) from Arusha on a dry weather road through Makuyuni, Mtowambu&Karatu Area.
- 45 minutes from Arusha Airport to Lake Manyara Airstrip.
- Manyara Airstrip is 45 Kms from the Camp, 'Meet and greet' and transfer services can be provided (Please advise arrival time in advance).

### ACTIVITIES

- Game Drives.
- Walking Safaris
- Nature Walks
- Cultural tour & dances
- Bushmen tour
- Photographic Safaris
- Bird watching

### CHECK IN FACILITIES

Check In 12:00 Hrs.  
Check out 10:00 Hrs  
Cold/Hot Towel

### SPECIAL FEATURES

Gift shop.  
Concierge

Wi – Fi

Telephone Services

## PLACES OF INTEREST



**Zainab Ansell,**  
Director,  
Tanzania Wildcamps & Lodges  
P.O.Box 94, Karatu  
Email: Sales@Wildcamps.com

**Reservation Department**  
Tel: +255 754 451 000  
Email: reservation@tanzaniawildcamps.com





## NGORONGORO SAFARI LODGE

Ngorongoro Conservation Area | Tanzania

### GUEST ROOM INFORMATION

Double / Twin Rooms  
10

#### About Ngorongoro Safari Lodge

**Ngorongoro Safari Lodge** is located in the South of the Ngorongoro Conservation Area, Approx. 50 km south – west of Karatu Town. The luxury lodge is composed of 10 comfortable luxury tents and as well as large dining and reception area.



#### Dining and Bar Activities

- Multi Cuisine Restaurant.
- African Theme Bar.
- Special dietary request catered for (e.g. Vegetarian, Kosher, Gluten. free) with advance notification.
- Sundowner Cocktails.
- Bush breakfast at a private site.
- Bush Barbecue lunch and Dinner

#### Transportation to /From Lodge

- 190 kms (3 - 4 Hours' Drive) from Arusha on a dry weather road through Makuyuni, Mtwambu&Karatu Area.
- 45 minutes from Arusha Airport to Lake Manyara Airstrip.
- Manyara Airstrip is 45 Kms from the Camp, 'Meet and greet' and transfer services can be provided (Please advise arrival time in advance).

#### ACTIVITIES

- Game Drives.
- Walking Safaris
- Nature Walks
- Cultural tour & dances
- Bushmen tour
- Photographic Safaris
- Bird watching

#### CHECK IN FACILITIES

Check In 12:00 Hrs.  
Check out 10:00 Hrs  
Cold/Hot Towel

#### SPECIAL FEATURES

Gift shop.  
Concierge  
Wi – Fi  
Telephone Services

## PLACES OF INTEREST

**Zainab Ansell,**  
Director,  
Tanzania Wildcamps & Lodges  
P.O.Box 94, Karatu  
Email: Sales@Wildcamps.com

**Reservation Department**  
Tel: +255 754 451 000  
Email: reservation@tanzaniawildcamps.com



Ngorongoro Safari Lodge





## SERENGETI WILD CAMPS

### GUEST ROOM INFORMATION

Serengeti National Park

Twin/Double Rooms 21  
Triple Rooms 3

#### About Serengeti Wild Camps

**Serengeti Wild Camp** is a mobile camp, located in the central part of the Serengeti National Park, in the seronera – Tana Extra area.

It features 20 spacious, self – contained private tents, with private showers and toilets. The Serengeti wild camp brings you closer to nature, as you hear elephants trumpeting far away at night.



#### Dining and Bar Activities

- Multi Cuisine Restaurant.
- African Theme Bar.
- Special dietary request catered for (e.g. Vegetarian, Kosher, Gluten. free) with advance notification.
- Sundowner Cocktails.
- Bush breakfast at a private site.
- Bush Barbecue lunch and Dinner

#### Transportation to /From Lodge

- 340 kms (8 - 9 Hours' Drive) from Arusha on a dry weather road through Makuyuni, Mtowambu, Karatu Area & Ngorongoro crater.
- 60 minutes flight from Arusha Airport to Seronera Airstrip.
- Seronera Airstrip is 7 Kms from the Camp, 'Meet and greet' and transfer services can be provided (Please advise arrival time in advance).

#### ACTIVITIES

- Game Drives.
- Hot Air Balloon Safaris
- Sunrise/ Sundowner game drive
- Cultural tour & dances
- Photographic Safaris
- Bird Watching

#### CHECK IN FACILITIES

Check In 12:00 Hrs.  
Check out 10:00 Hrs

Cold/Hot Towel

#### SPECIAL FEATURES

Gift shop.  
Concierge

Wi – Fi

### PLACES OF INTEREST

**Zainab Ansell,**  
Director,  
Tanzania Wildcamps & Lodges  
P.O.Box 94, Karatu  
Email: Sales@Wildcamps.com

**Reservation Department**  
Tel: +255 754 451 000  
Email: reservation@tanzaniawildcamps.com





## SERENGETI WILDEBEEST CAMPS

### GUEST ROOM INFORMATION

Serengeti National Park

Twin/Double Rooms 11  
Triple Rooms 3

#### About Serengeti Wildebeest Camps

#### Dining and Bar Activities

##### ACTIVITIES

- Game Drives.
- Hot Air Balloon Safaris
- Sunrise/ Sundowner game drive
- Cultural tour & dances
- Photographic Safaris
- Bird Watching

##### CHECK IN FACILITIES

Check In 12:00 Hrs.  
Check out 10:00 Hrs  
Cold/Hot Towel

##### SPECIAL FEATURES

Gift shop.  
Concierge

Wi – Fi

Telephone Services

**Serengeti Wildebeest Camp** is a mobile camp, located in the central part of the Serengeti National Park, the seronera – Tana Spring area.

It features 14 spacious, self-contained private tents, with private showers and toilets. The Serengeti wildebeest camp brings you closer to nature, as you hear elephants trumpeting far away at night.

- Multi Cuisine Restaurant.
- African Theme Bar.
- Special dietary request catered for (e.g. Vegetarian, Kosher, Gluten. free) with advance notification.
- Sundowner Cocktails.
- Bush breakfast at a private site.
- Bush Barbecue lunch and Dinner

#### Transportation to /From Lodge

- 358 kms (8 - 9 Hours' Drive) from Arusha on a dry weather road through Makuyuni, Mtowambu, Karatu Area&Ngorongoro crater.
- 60 minutes flight from Arusha Airport to Seronera Airstrip.
- Seronera Airstrip is 7Kms from the Camp, 'Meet and greet' and transfer services can be provided (Please advise arrival time in advance).

## PLACES OF INTEREST

**Zainab Ansell,**  
Director,  
Tanzania Wildcamps & Lodges  
P.O.Box 94, Karatu  
Email: Sales@Wildcamps.com

**Reservation Department**  
Tel: +255 754 451 000  
Email: reservation@tanzaniawildcamps.com







## SERENGETI SAFARI LODGE

### GUEST ROOM INFORMATION

Twin/Double Rooms 15

Serengeti National Park

### About Serengeti Safari Lodge

**Serengeti Safari Lodge**  
the lodge is located in the heart of the famous Serengeti National Park, the Seronera Tana Spring Area. It features 15 spacious self-contained tents, each equipped with private showers and toilets. The Serengeti Safari Lodge provides guests with luxury and unforgettable firsthand experiences in the Continent of Africa, the wildlife, landscape, natural wonders and the exciting atmosphere of one of Tanzania's Most famous National Parks. It is modern, luxury and offers many contemporary amenities, such as a restaurant with local and continental cuisine, a lounge with bar, fire place, entertainment and internet, gift shop, spa, massages and a modern swimming pool. **Imagine swimming Pool in the middle of Serengeti?**

#### ACTIVITIES

- Game Drives.
- Hot Air Balloon Safaris
- Sunrise/Sundowner game drive
- Cultural tour & dances
- Photographic Safaris

#### CHECK IN FACILITIES

Check In 12:00 Hrs.  
Check out 10:00 Hrs  
Cold/Hot Towel

#### SPECIAL FEATURES

Gift shop.  
Concierge  
Wi – Fi  
Telephone Services

**Zainab Ansell,**  
Director,  
Tanzania Wildcamps & Lodges  
P.O.Box 94, Karatu  
Email: Sales@Wildcamps.com  
  
**Reservation Department**  
Tel: +255 754 451 000  
Email: reservation@tanzaniawildcamps.com

### Dining and Bar Activities

- Multi Cuisine Restaurant.
- African Theme Bar.
- Special dietary request catered for (e.g. Vegetarian, Kosher, Gluten. free) with advance notification.
- Sundowner Cocktails.
- Bush breakfast at a private site.
- Bush Barbecue lunch and Dinner

### Transportation to /From Lodge

- 360kms (9 - 10 Hours' Drive) from Arusha on a dry weather road through Makuyuni, Mtwambu, Karatu Area & Ngorongoro crater.
- 60 minutes flight from Arusha Airport to Seronera Airstrip.
- Seronera Airstrip is 11Kms from the Camp, 'Meet and greet' and transfer services can be provided (Please advise arrival time in advance).

### PLACES OF INTEREST







# IKOMA WILD CAMPS

## GUEST ROOM INFORMATION

Double/Twin Rooms 20  
Triple Room 3

Serengeti national park

## About Ikoma Wild Camps

Serengeti "Ikoma" Wild camp is located on the buffer zone of Serengeti Ecosystem between grumeti and the Ikorongo Game reserve, Northwest of Serengeti. Our comfortable permanent camp consists of 10 huts/Boma and 15 spacious tents, well furnished with en-suite bathroom.

Enjoy the stunning view over the surrounding savannah, which is full of wildlife through the year. The camp can accommodate up to 46 pax

## Dining and Bar Activities

- Multi Cuisine Restaurant.
- African Theme Bar.
- Special dietary request catered for (e.g. Vegetarian, Kosher, Gluten. free) with advance notification.
- Sundowner Cocktails.
- Bush breakfast at a private site.
- Bush Barbecue lunch and Dinner

## Transportation to /From Lodge

- 350 kms (8 - 10 Hours' Drive) from Arusha on a dry weather road through Makuyuni, Mtowambu, Karatu Area & Ngorongoro crater.
- 60 minutes flight from Arusha Airport to Seronera Airstrip.
- Seronera Airstrip is 49Kms from the Camp, 'Meet and greet' and transfer services can be provided

### ACTIVITIES

- Game Drives.
- Hot Air Balloons Safaris
- Walking Safaris
- Nature Walks
- Cultural tour & dances
- Photo Graphic Safaris
- Bush fire
- Bird Watching

### CHECK IN FACILITIES

Check In 12:00 Hrs.  
Check out 10:00 Hrs  
Cold/Hot Towel

### SPECIAL FEATURES

Gift shop.  
Concierge

Wi - Fi

Telephone Services

## PLACES OF INTEREST

**Zainab Ansell,**  
Director,  
Tanzania Wildcamps & Lodges  
P.O.Box 94, Karatu  
Email: Sales@Wildcamps.com

**Reservation Department**  
Tel: +255 754 451 000  
Email: reservation@tanzaniawildcamps.com





# IKOMA WILDCAMP SPECIAL PACKAGES

## IKOMA WILDCAMP SAFARI



### WALKING SAFARI

Starts from 1600 hrs up to 1800Hrs, walking along river Grumeti with your walking guide and an armed ranger. There are high chances of meeting the African elephants buffalos and lions.

Learn some medicinal trees, geographical features, insects, etc'

Learn about the history of the local tribe.

Guests will have a chance seeing the sun setting in the African sky and served with drink of their choice at extra cost.



### NIGHT GAME DRIVE

A Safari in our open side game vehicle along river Grumeti from 20.00 Hrs up to 21.00 hrs. There are chances of spotting nocturnal animals like Leopard, Sevo, Weasel, large spotted genet, common genet, marsh mongoose, hyenas, aardwolf, honey badger African golden cat and African wildcat.





# When to go on safari in Tanzania

## A

Basically there is no bad time to go on safari in Tanzania. Whenever you go you will see fantastic wildlife. Like climbing Mt Kilimanjaro though, when the weather is kindest it can get crowded but if you can go a little off peak and cope with the occasional shower you will find quiet parks and amazing viewing.

December to March is the summer season in Tanzania. Temperatures are pleasant with an average high of 28°C and an average low of 15°C. The rains from early November to late March are usually scattered and localised and do not last for more than a few hours. All in all the conditions for safaris could not be better. The wildebeest are in the southern Serengeti making this a perfect time to catch the migration.

## B

Although there is a chance of heavy rain during April and May and showers can be expected for a few hours most days this is still a good time to visit. Particularly during April and May the parks are fairly empty and accommodation costs are often quite a bit lower. However, this time actually offers the finest game viewing opportunities of the year. Wildlife concentrations are at their highest in the Southern Serengeti, and the landscape is a lush green.

During the period from June to November, the weather is usually dry and sunny, although October to December brings the short rains to Tanzania. The grass dies back and more and more animals congregate around the permanent sources of water making them easier to find. Visitor numbers (and prices) peak in August coinciding with holidays in the Northern Hemisphere.

### January to March

A dry spell between the short and long rains and the very best time to see the wildebeest migration in the Southern Serengeti.

***Dry and excellent game viewing***

### April and May

Typically the long rains begin at the end of March and carry on steadily until the end of May when warmer drier weather returns. Parks are quiet and the wildebeest are still in the South of the Serengeti.

***Wet weather but excellent game viewing***

### June to October

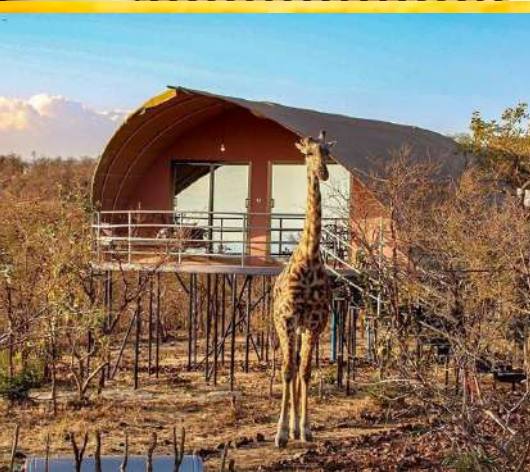
Afternoon temperatures are usually around 27°C/81°F and most days have a fine, clear sky and sunny weather. As the parks dry out the animals crowd towards water sources making Tarangire Park a great choice as well as Grumeti and Ngorongoro

***Hot, dry conditions***

### November & December

An unpredictable period of about a month of rains occurs between late October and December. The rains will be unlikely to interfere with your safari and it is rare for it to rain continuously throughout the day.

***Another excellent time for game viewing***



**TANZANIA WILD CAMPS**  
P.O.BOX 94, Karatu, Tanzania.

Tel: +255 784 451 000  
24Hrs: +255 754 451 000  
Email : [sales@wildcamps.com](mailto:sales@wildcamps.com)



**TANZANIA  
WILD CAMPS**